



COMPANY PROFILE

Kinkubi Solutions



Kinkubi

Drilling solutions for the world!



Overview

Kinkubi Solutions Ltd is a wholly own Ghanaian company. Our story began in 2008 as Kinkubi Solutions. A mine support services entity, focused on becoming a leading mining and hydro services provider with an impeccable record of excellence and efficiency in the mining industry in Ghana and Africa.

Operations

Kinkubi's operational structure encompasses the provision of Grade control (RC) drilling, BlastHoles Drilling and Blasting, Load and Haulage, Weep hole drilling, monitoring wells, dewatering and Piezometre installations, Borehole drilling and Mechanization etc. We also engage in breaking of Rock boulders and Heavy Equipment rental.

We are currently providing various services in Ghana to Goldfields Ghana limited both Damang and Tarkwa sites, Asanko Gold Ghana limited in Manso Edubea and Adamus Resources Limited. We are also present in Endeavour Mining (Houde Gold Operations SA) Burkina Faso.

We are well positioned to undertake major auxiliary mining services to mining companies across Africa. Because, over the years, our capacity has been developed by a tremendous investment in People, Equipment and plant pool to conveniently undertake major contracts in Drilling and Blasting, Rock breaking, Load and Haulage, Weep Holes, Monitoring Wells, Dewatering and Installation of Piezometer and general mining constructions.

About Us

In whatever sphere of operation, we accord our clients and partners, the best of service possible-within our capacity. Kinkubi Solutions Ltd is authorized by Ghanaian Business Regulations to undertake;

- Grade Control
- Drilling of Monitoring Wells
- Drill and Blast
- Exploration Drilling
- Weep Holes
- Piezometer Installation
- Drilling and Mechanization of Boreholes
- Water Treatment
- Equipment Rental
- Breaking of Rock Boulders
- Load and Haul
- Transport Services
- Plant Maintenance and Work Services
- Road Construction
- Environmental and Waste management
- Import and Export of General Goods and Machinery
- Sales and Distributions



Mission

We elevate mine pit operations through advanced drilling solutions, prioritizing the health and wellbeing of our team and the sustainability of our environment.

Vision

To be recognized and respected as the leading provider of safe, efficient, and sustainable mine drilling and other essential mine services globally.

Values

- E. Excellence:** We are committed to achieving the highest standards in everything we do, from our drilling techniques to our service delivery, constantly seeking improvement.
- S. Safety:** The health and wellbeing of our employees, partners, and communities are our absolute top priority, guiding every decision and action.
- I. Integrity:** We operate with honesty, transparency, and strong ethical principles in all our interactions and business practices.
- T. Teamwork:** We foster a collaborative environment where diverse talents work together, supporting each other to achieve shared goals and overcome challenges.
- E. Environmental Stewardship:** dedicated to minimizing our environmental footprint, promoting responsible resource

management, and contributing positively to the ecosystems where we operate

- C. Client Focus:** We prioritize understanding and anticipating our clients' needs, delivering exceptional service and innovative solutions that consistently exceed their expectations.

Our Team

Our leadership team is comprised of the Board of Directors, a Managing Director (MD) who guides our strategic vision, supported by key functional heads: a General Manager, Finance and Administrative Manager, Drilling Manager (a geological engineer), Mechanical Engineer, Civil Engineer, and Human Resources Manager. This structure ensures specialized expertise across all facets of our operations, from engineering to resource management. Beyond management, our dedicated and diverse workforce, comprising skilled and unskilled personnel, forms the backbone of our operations. A core group of our labour force resides in company-provided accommodation adjacent to our operational sites, ensuring rapid deployment and optimal response times for all projects.

Objective

To be involved in transactions with the highest forms of integrity and transparency to positively affect the lives of individuals and communities in which we operate.



Activities

Our forward-thinking approach ensures we consistently deliver top-tier service and reliable solutions to our clients and partners, excelling in every aspect of mine drilling and integrated mine services.

Production and Grade Control Drilling

We engage in production drilling which physically enables extraction, as well as grade control drilling which provides the essential geological information to ensure the right material is mined and processed economically.

Geotechnical and Environmental Activities

We are well resourced to drill and install 5inches to 14inches bore with a depth of 200 metres to 300 metres. For greenfield sites, we conduct targeted drilling programs to gather data for characterizing geotechnical conditions. Our experienced staff understand that coupling drilling programs with disciplines such as exploration and hydrogeology facilitate cost-effective generation of integrated data results. We undertake:

- Geotechnical investigation program design and management
- On-site geotechnical data collection, interpretation, and management and staff supervision and training
- Core logging, geotechnical and geological mapping, and 2D photogrammetric analysis
- Installation of and Monitoring wells using Piezometers (Stand-Pipe, Vibrating wire pipe Inclinator, Observation wells

Road Construction

We can also effectively clear sites, construct roads, provide access roads for mining activities and other purposes, and even contracted to remove top soil under specifications for surface mining and communities.

Waste Management

We are also in position to manage waste in defined communities to ensure healthy-friendly environment, covering waste bins and heap unto waste pit.

Rental and Haulage

Our robust fleet of trucks and earthmoving equipment is capable of hauling over 5,000 tons of material daily, ensuring efficient and high-volume transport for your projects. We also utilize various sizes of hydraulic breakers for effective rock and boulder management.



Health, Safety, Environment and Quality Policy



At Kinkubi Solutions, we are committed to Health, Safety & Environment and quality service and they are integral to the way we do business. We recognize communities, employees, business partners, suppliers and customers as stakeholders. We are committed to continual improvement in our performance. We commit to zero harm to people, environment and property, efficient and total customer satisfaction and improved value for our shareholders. Our management system is consistent with international and organizational standards, legislation and other relevant requirements. We undertake to ensure that our management system is developed, documented, implemented, and maintained in a manner that is both understood and effective at all levels in our business, to enable us to:

- Identify, assess and manage risks to our employees, client's employees and the environment.
- Commit to achieving leading industry practice and recognition.
- Meet and where appropriate, exceed applicable legislation.
- Lead and develop our people and provide resources to achieve our targets.
- Support the fundamental human rights of employees and safeguard them from exposure to unacceptable risk. We will seek opportunities to share our success by developing partnerships that focus on creating sustainable value for all stakeholders. We will regularly review our progress and communicate results to all stakeholders in order to enable a relationship based on honesty, openness and mutual trust. We will be successful when we achieve our targets toward our goal of zero harm and are valued by the clients in which we work.

Kinkubi Solutions - Equipment List

| | Machine ID | Equipt Type | Status | Serial Number | Make | Specification |
|---------------|-------------------|-------------|---------|---------------|------|---------------|
| SR NO. | ADT TRUCKS | | | | | |
| 1 | ADT01 | DUMP TRUCK | KINKUBI | | | ADT740 |
| 2 | ADT03 | DUMP TRUCK | KINKUBI | LFK00715 | | ADT745 |
| 3 | ADT04 | DUMP TRUCK | KINKUBI | LFK00718 | | ADT745 |
| 4 | ADT05 | DUMP TRUCK | KINKUBI | | | ADT745 |
| 5 | ADT06 | DUMP TRUCK | KINKUBI | LFK00713 | | ADT745 |
| 6 | ADT07 | DUMP TRUCK | KINKUBI | | | ADT 745C |
| 7 | ADT08 | DUMP TRUCK | KINKUBI | | | ADT 745C |
| 8 | ADT09 | DUMP TRUCK | KINKUBI | | | ADT 745C |
| 9 | ADT21 | DUMP TRUCK | KINKUBI | | | ADT 745C |
| 10 | ADT22 | DUMP TRUCK | KINKUBI | | | ADT 745C |
| 11 | ADT23 | DUMP TRUCK | KINKUBI | | | ADT 745C |
| 12 | ADT25 | DUMP TRUCK | KINKUBI | | | ADT 745C |
| 13 | ADT 2 | DUMP TRUCK | KINKUBI | | | ADT 745C |
| 14 | ADT 3 | DUMP TRUCK | KINKUBI | | | ADT 745C |
| 15 | ADT 4 | DUMP TRUCK | KINKUBI | | | ADT 745C |
| | | | | | | |
| | EXCAVATORS | | | | | |
| 1 | EXC CAT 336D | EXCAVATOR | KINKUBI | 9PZ00501 | | CAT 365BL |
| 2 | EXC CAT 349D | EXCAVATOR | KINKUBI | 9PZ00492 | | CAT 365BL |
| 3 | EXC CAT 374F | EXCAVATOR | KINKUBI | | | CAT 365BL |
| 4 | EXC CAT 390F-04 | EXCAVATOR | KINKUBI | MFL00246 | | CAT 374F |
| 5 | EXC CAT 390F-05 | EXCAVATOR | KINKUBI | | | CAT 349DL |
| 6 | CAT 365BL | EXCAVATOR | KINKUBI | | | |
| | CAT 374F | EXCAVATOR | KINKUBI | | | |
| | CAT 349DL | EXCAVATOR | KINKUBI | | | |
| | | | | | | |
| | BULDOZERS | | | | | |
| 1 | D6R | DOZER | KINKUBI | | | CAT D6R |
| 2 | D8R-01 | DOZER | KINKUBI | | | CAT D8R |
| 3 | D8R-02 | DOZER | KINKUBI | 9EM06609 | | CAT D8R |
| 4 | D8R-03 | DOZER | KINKUBI | | | CAT D9R |
| 5 | D8R-04 | DOZER | KINKUBI | | | CAT D8R |
| 6 | D8R-05 | DOZER | KINKUBI | | | |
| 7 | D9R-01 | | KINKUBI | | | |
| 8 | D9R-02 | | KINKUBI | | | |

Kinkubi Solutions - Equipment List

| | Machine ID | Equipt Type | Status | Serial Number | Make | Specification |
|---------------|--------------------------------|-------------|---------|---------------|------|---------------|
| SR NO. | MAN DIESEL TRUCKS | | | | | |
| 1 | TP4 | MAN DIESEL | KINKUBI | | | MAN DIESEL |
| 2 | TP5 | MAN DIESEL | KINKUBI | | | MAN DIESEL |
| 3 | TP6 | MAN DIESEL | KINKUBI | | | MAN DIESEL |
| 4 | TP7 | MAN DIESEL | KINKUBI | | | MAN DIESEL |
| 5 | TP8 | MAN DIESEL | KINKUBI | | | MAN DIESEL |
| 6 | TP9 | MAN DIESEL | KINKUBI | | | MAN DIESEL |
| 7 | TP10 | MAN DIESEL | KINKUBI | | | MAN DIESEL |
| 8 | TP11 | MAN DIESEL | KINKUBI | | | MAN DIESEL |
| 9 | TP12 | MAN DIESEL | KINKUBI | | | MAN DIESEL |
| 10 | TP 1 | IVECO | KINKUBI | | | |
| 11 | TP 2 | IVECO | KINKUBI | | | |
| 12 | TP 3 | IVECO | KINKUBI | | | |
| | | | | | | |
| | GRADERS | | | | | |
| 1 | 14m | GRADER | KINKUBI | | | |
| 2 | 140H | GRADER | KINKUBI | 5HM02361 | | |
| 3 | 140k | GRADER | KINKUBI | | | |
| | | | | | | |
| | WHEEL LOADER | | | | | |
| 1 | 980H | LOADER | KINKUBI | | | CAT Loader |
| 2 | 966L | LOADER | KINKUBI | | | CAT Loader |
| | | | | | | |
| | WATER BOWSER | | KINKUBI | | | |
| 1 | WATER BOWSER HIRING | | KINKUBI | | | |
| 2 | WATER BOWSER | | KINKUBI | | | |
| | | | | | | |
| | TOWER LIGHTS | | | | | |
| 1 | ALMAND 100W | TOWER LIGHT | KINKUBI | | | CAT |
| 2 | ALMAND 100W | TOWER LIGHT | KINKUBI | | | CAT |
| 3 | ALLIGHT (U10472) | TOWER LIGHT | KINKUBI | | | CAT |
| | | | | | | |
| | RIGS | | | | | |
| 1 | ATLASCOPCO L8 FOR WEEP HOLES | | KINKUBI | | | |
| 2 | SPEED STAR 10 FOR BOREHOLES | | KINKUBI | | | |
| 3 | SPEED STAR 15 FOR BIG BORES | | KINKUBI | YC6B125-T20 | | |
| 4 | ATLASCOPCO T45 FOR BLAST HOLES | | KINKUBI | | | |

D8 DOSER



ADT



ROCK BREAKER



T45



ROC L8



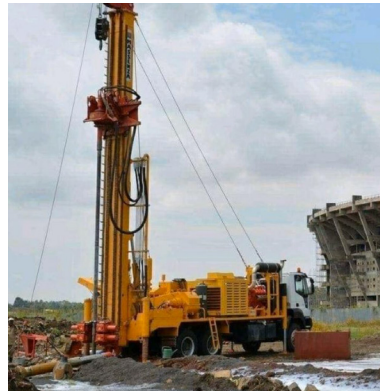
D65



TIPPER TRUCK



DRILL RIG



TIPPER TRUCK





Invitation

Kinkubi Solutions Ltd resolves to provide top-tier services to support the mining and construction industry across Ghana and Africa.

The Company delivers on all of its Clients' needs and requirements in a cost effective way without compromising on quality, safety and the environment in a manner that enhances client's capacity to sustain and guarantee the economic and social license it operates with.

All are welcome to do business with us. We assure you of a rewarding return on investment. Please call on us to serve you as we have been serving others and we believe, like them, you will experience the exciting delivery of our world class solutions.

Thank you, Dear Partner.

EMMANUEL APPIAH,

A handwritten signature in blue ink, appearing to read "Emmanuel Appiah", is positioned below the name.

(Managing Director)

Email: info@kinkubi.com/kingkubi1@yahoo.com

Website: www.kinkubi.com

Tel: 0322398671

Mobile: 0243504248



Kinkubi

Solutions

- 📍 AG-0742-7332
Near DBS Industries,
Supreme Concrete Products
Opposite DVLA, Nkoransa
Kumasi - Bekwai Road
- ✉️ P. O. BOX SN 366
Santasi-Kumasi
- ☎️ +233 32 239 8671
+233 24 350 4248
- 🌐 info@kinkubi.com
www.kinkubi.com